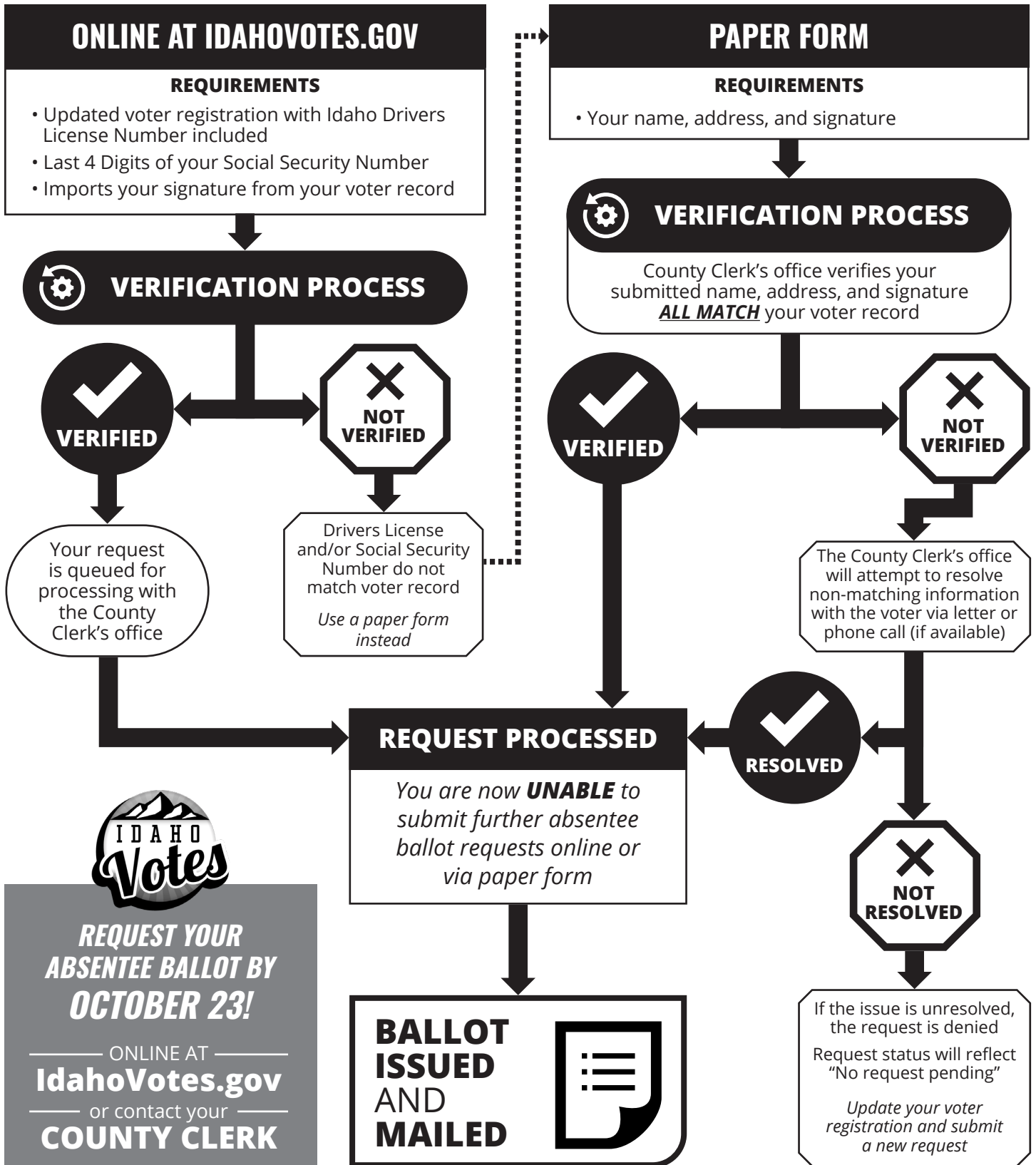


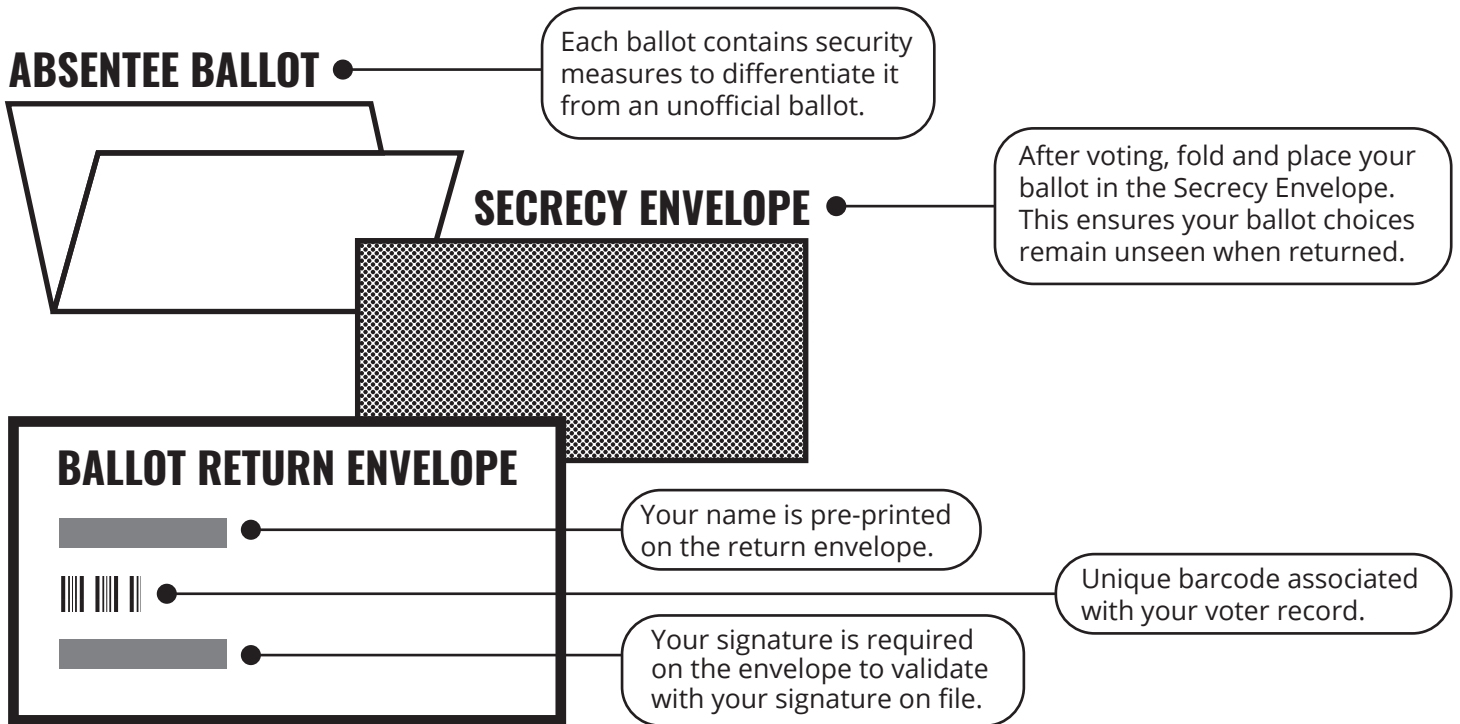
# HOW WE SECURE YOUR ABSENTEE BALLOT

## PART 1: THE REQUEST PROCESS



---

## PART 2: SECURITY MEASURES



## PART 3: BALLOT RETURN PROCESS

You're almost done! When the County Clerk's office receives your return envelope, they do the following:

**FIRST:** Your signature on the envelope is verified against your signature in your voter record. **If they DO NOT MATCH, the envelope is not opened and the County Clerk will attempt to resolve the issue with the voter.**

**SECOND:** The outer return envelope is opened and the secrecy envelope containing your ballot is removed. The County Clerk's office will verify that only one secrecy envelope is included in the return envelope. **If there are MULTIPLE SECRECY ENVELOPES in the return envelope, the County Clerk will attempt to resolve the issue with the voter.**

**THIRD:** The secrecy envelope is opened and your ballot is removed. The County Clerk's office will verify that only one ballot is contained in the secrecy envelope. **If there are MULTIPLE BALLOTS in the secrecy envelope, the ballots are spoiled.**

**FOURTH:** Your ballot is inspected for the proper security measures. The County Clerk's office will verify that the ballot is official using the established security measures. **If the security measures DO NOT MATCH, the ballot is held for investigation.**

**FINALLY:** Your ballot is ready to be scanned for tabulation or prepared for hand counting, depending on your county.